

IN A NEW LIGHT: BELLINI'S ST. FRANCIS IN THE DESERT

May 22, 2011, through August 28, 2011

The Frick Collection, New York

PRESS IMAGE LIST

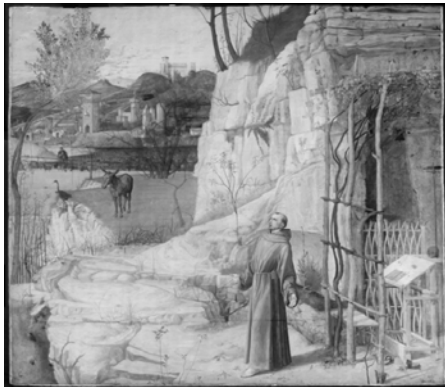
Digital images are available for publicity purposes; please contact the Press Office at 212.547.6844 or mediarelations@frick.org.

1.



Giovanni Bellini (c. 1430/1435–1516)
St. Francis in the Desert, c. 1475–78
Oil on poplar panel, 49 x 55 $\frac{7}{8}$ inches
The Frick Collection, New York
Photo: Michael Bodycomb

2.



Giovanni Bellini (c. 1430/1435–1516)
Infrared reflectogram of *St. Francis in the Desert*, c. 1475–78
Oil on poplar panel, 49 x 55 $\frac{7}{8}$ inches
The Frick Collection, New York
Technical photography by Department of Paintings
Conservation, The Metropolitan Museum of Art
Image © The Metropolitan Museum of Art

3.



Giovanni Bellini (c. 1430/1435–1516)
Detail of *St. Francis in the Desert*, c. 1475–78
Oil on poplar panel, 49 x 55 $\frac{7}{8}$ inches
The Frick Collection, New York
Photo: Michael Bodycomb

4.



Giovanni Bellini (c. 1430/1435–1516)
Infrared reflectogram detail of *St. Francis in the Desert*,
c. 1475–78
Oil on poplar panel, 49 x 55 $\frac{7}{8}$ inches
The Frick Collection, New York
Technical photography by Department of Paintings
Conservation, The Metropolitan Museum of Art
Image © The Metropolitan Museum of Art

5.



Giovanni Bellini (c. 1430/1435–1516)
Detail of *St. Francis in the Desert*, c. 1475–78
Oil on poplar panel, 49 x 55 $\frac{7}{8}$ inches
The Frick Collection, New York
Photo: Michael Bodycomb

6.



Giovanni Bellini (c. 1430/1435–1516)
Infrared reflectogram detail of *St. Francis in the Desert*,
c. 1475–78
Oil on poplar panel, 49 x 55 $\frac{7}{8}$ inches
The Frick Collection, New York
Technical photography by Department of Paintings
Conservation, The Metropolitan Museum of Art
Image © The Metropolitan Museum of Art

7.



Giovanni Bellini (c. 1430/1435–1516)
Detail of *St. Francis in the Desert*, c. 1475–78
Oil on poplar panel, 49 x 55 $\frac{7}{8}$ inches
The Frick Collection, New York
Photo: Michael Bodycomb

8.



Giovanni Bellini (c. 1430/1435–1516)
Infrared reflectogram detail of *St. Francis in the Desert*,
c. 1475–78
Oil on poplar panel, 49 x 55 7/8 inches
The Frick Collection, New York
Technical photography by Department of Paintings
Conservation, The Metropolitan Museum of Art
Image © The Metropolitan Museum of Art

These jpegs are on loan exclusively for publicity purposes. Please return any distributed disks to the Media Relations & Marketing Department/The Frick Collection/1 East 70th Street/New York, NY 10021. Permission for any other use of this material must be sought separately.

- * These photo materials may not be lent or used again for publication without prior permission.
- * Reproductions may not run off the edge of the paper.
- * Reproductions may not be superimposed with type matter or in any way defaced or altered.
- * The word “detail” must appear in the caption with the complete credit line in the event that a detail is used.
- * **Required for publication:** with each image, the collection and photo credits as indicated above must be included in print.
- * Publisher shall furnish a complimentary copy of the issue of the periodical or book in which the reproduction(s) appears.