

THE FRICK COLLECTION

Gainsborough: The Fashion of Portraiture

FEBRUARY 12 THROUGH MAY 11, 2026

Digital images are available for publicity purposes.
Please contact the Communications Department
at communications@frick.org.

1



Thomas Gainsborough (1727–1788)
*Peter Darnell Muilman, Charles Crockatt,
and William Keable*, ca. 1750
Oil on canvas
30 1/8 × 25 1/4 in. (76.5 × 64.2 cm)
Gainsborough's House, Sudbury, Suffolk, and
Tate, London

2



Thomas Gainsborough (1727–1788)
Mr. and Mrs. Andrews, ca. 1750
Oil on canvas
27 1/2 × 47 in. (69.8 × 119.4 cm)
© The National Gallery, London

3



Thomas Gainsborough (1727–1788)
The Gravenor Family, ca. 1754
Oil on canvas
35 1/2 × 35 1/2 in. (90.2 × 90.2 cm)
Yale Center for British Art, New Haven

4



Thomas Gainsborough (1727–1788)
Sarah Hodges, Later Lady Innes, ca. 1759
 Oil on canvas
 40 × 28 5/8 in. (101.6 × 72.7 cm)
 The Frick Collection, New York
 Photo: Michael Bodycomb

5



Thomas Gainsborough (1727–1788)
Mary, Countess Howe, 1763–64
 Oil on canvas
 94 15/16 × 60 3/4 in. (243.2 × 154.3 cm)
 English Heritage, Kenwood House, London
 © Historic England / Bridgeman Images

6



Thomas Gainsborough (1727–1788)
Lords John and Bernard Stuart, after Anthony van Dyck, ca. 1765
 Oil on canvas
 92 1/2 × 57 1/2 in. (235 × 146.1 cm)
 Saint Louis Art Museum

7



Thomas Gainsborough (1727–1788)
Captain Augustus John Hervey, Later 3rd Earl of Bristol, ca. 1768

Oil on canvas

91 5/16 × 60 1/16 in. (232 × 152.5 cm)

National Trust Collections, Ickworth, Suffolk

© National Trust Images

8



Thomas Gainsborough (1727–1788)
Mary, Duchess of Montagu, ca. 1768

Oil on canvas

49 1/4 × 39 1/2 in. (125.1 × 100.3 cm)

Duke of Buccleuch, Bowhill House,
 Scottish Borders

Photo courtesy The Buccleuch Living
 Heritage Trust

9



Thomas Gainsborough (1727–1788)
Ignatius Sancho, 1768

Oil on canvas

29 × 24 1/2 in. (73.7 × 62.2 cm)

National Gallery of Canada, Ottawa

10



Thomas Gainsborough (1727–1788)
Gainsborough Dupont, ca. 1770–72
 Oil on canvas
 17 15/16 × 14 3/4 in. (45.5 × 37.5 cm)
 Tate, London

11



Thomas Gainsborough (1727–1788)
Master John Heathcote, ca. 1771–72
 Oil on canvas
 50 × 39 13/16 in. (127 × 101.2 cm)
 National Gallery of Art, Washington, D.C.

12



Thomas Gainsborough (1727–1788)
Carl Friedrich Abel, ca. 1777
 Oil on canvas
 88 3/4 × 59 1/2 in. (225.4 × 151.1 cm)
 The Huntington Library, Art Museum, and
 Botanical Gardens, San Marino
 © Huntington Art Museum

13



Thomas Gainsborough (1727–1788)

Pomeranian and Puppy, ca. 1777

Oil on canvas

32 3/4 × 44 in. (83.2 × 111.8 cm)

Tate, London

14



Thomas Gainsborough (1727–1788)

The Hon. Frances Duncombe, ca. 1776

Oil on canvas

92 1/4 × 61 1/8 in. (234.3 × 155.3 cm)

The Frick Collection, New York

Photo: Joseph Coscia Jr.

15



Thomas Gainsborough (1727–1788)

Margaret Gainsborough, ca. 1778

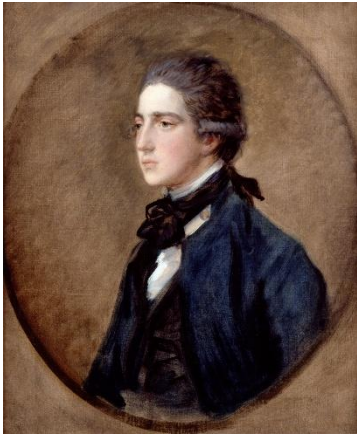
Oil on canvas

30 3/16 × 25 1/8 in. (76.6 × 73.8 cm)

The Courtauld, London

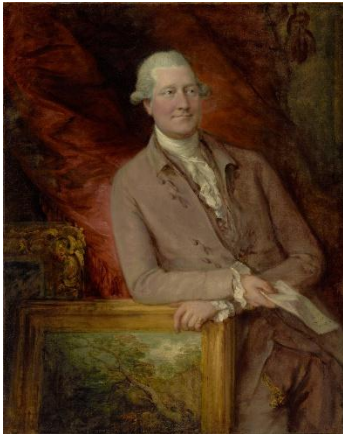
© The Courtauld / Bridgeman Images

16



Thomas Gainsborough (1727–1788)
Samuel Linley, ca. 1778
 Oil on canvas
 29 13/16 × 25 in. (75.8 × 63.5 cm)
 Dulwich Picture Gallery, London
 © Dulwich Picture Gallery / Bridgeman Images

17



Thomas Gainsborough (1727–1788)
James Christie, 1778
 Oil on canvas
 50 1/4 × 40 1/4 in. (127.6 × 102.2 cm)
 J. Paul Getty Museum, Los Angeles

18



Thomas Gainsborough (1727–1788)
Grace Dalrymple Elliott, 1778
 Oil on canvas
 92 1/4 × 60 1/2 in. (234.3 × 153.7 cm)
 The Metropolitan Museum of Art, New York
 Photo courtesy The Metropolitan Museum
 of Art / ArtResource

19



Thomas Gainsborough (1727–1788)
Mrs. Samuel Moody and Her Sons, Samuel and Thomas, ca. 1779, reworked ca. 1784
 Oil on canvas
 92 1/8 × 60 11/16 in. (234 × 154.2 cm)
 Dulwich Picture Gallery, London
 © Dulwich Picture Gallery / Bridgeman Images

20



Thomas Gainsborough (1727–1788)
John Joseph Merlin, ca. 1781
 Oil on canvas
 30 × 25 in. (76.2 × 63.5 cm)
 English Heritage, Kenwood House, London
 © Historic England / Bridgeman Images

21



Thomas Gainsborough (1727–1788)
Grace Dalrymple Elliott, 1782
 Oil on canvas
 30 1/8 × 25 in. (76.5 × 63.5 cm)
 The Frick Collection, New York
 Photo: Michael Bodycomb

22



Thomas Gainsborough (1727–1788)

Mrs. Fitzherbert, ca. 1784

Oil on canvas

29 7/8 × 25 in. (75.9 × 63.5 cm)

Fine Arts Museums of San Francisco

Photo courtesy the Legion of Honor

23



Thomas Gainsborough (1727–1788)

Mrs. Sheridan, probably 1783, altered
between 1785 and 1787

Oil on canvas

86 1/2 × 60 1/2 in. (219.7 × 153.7 cm)

National Gallery of Art, Washington, D.C.

24



Thomas Gainsborough (1727–1788)

Thomas Gainsborough, ca. 1787

Oil on canvas

30 7/8 × 25 3/8 in. (77.3 × 64.5 cm)

© Royal Academy of Arts, London

Photo: Prudence Cuming Associates Limited



Thomas Gainsborough (1727–1788)

*Bernard Howard, Later 12th Duke
of Norfolk, 1788*

Oil on canvas

88 × 54 in. (223.5 × 137.2 cm)

His Grace, the Duke of Norfolk,
Arundel Castle, Sussex

RIGHTS AND REPRODUCTION INFORMATION

The images distributed are on loan exclusively for publicity purposes. Permission for any subsequent use of this material must be sought separately by contacting the Frick's Communications Department (communications@frick.org).

Images must be reproduced crediting The Frick Collection or other institutions as indicated and including photo credits as indicated or provided.

Downloadable links may not be forwarded or distributed to others without prior permission.

For reproductions, images may not run off the edge of the paper and may not be superimposed with type matter or in any way defaced or altered. Exceptions have been granted, subject to prior conversation and approval. To pursue, contact communications@frick.org.

The word "detail" must appear in the caption with the complete credit line in the event that a detail is used.