

HENRY ARNHOLD'S MEISSEN PALACE: CELEBRATING A COLLECTOR

On View Beginning November 7, 2019

The Frick Collection, New York

SELECTED PRESS IMAGE LIST

Digital images are available for publicity purposes; please contact the Press Office at (212) 547-0710 or communications@frick.org.

1.



Bowl and Saucer

Hard-paste porcelain, ca. 1720

Decorated outside the factory, ca. 1745

Saucer, D: 5 1/8 inches

Tea Bowl, H: 1 3/4 inches

The Frick Collection, Gift of Henry H. Arnhold, 2019

Photo: Michael Bodycomb

2.



Vase with Cover

Hard-paste porcelain, ca. 1725

Meissen Porcelain Manufactory

H: 9 1/4 inches

The Frick Collection, Gift of Henry H. Arnhold, 2019

Photo: Michael Bodycomb

3.



Teapot

Hard-paste porcelain, ca. 1729–31

Meissen Porcelain Manufactory

H: 4 7/8 inches

The Frick Collection, Gift of Henry H. Arnhold, 2019

Photo: Michael Bodycomb

4.



Teapot

Hard-paste porcelain, ca. 1725–30

Meissen Porcelain Manufactory

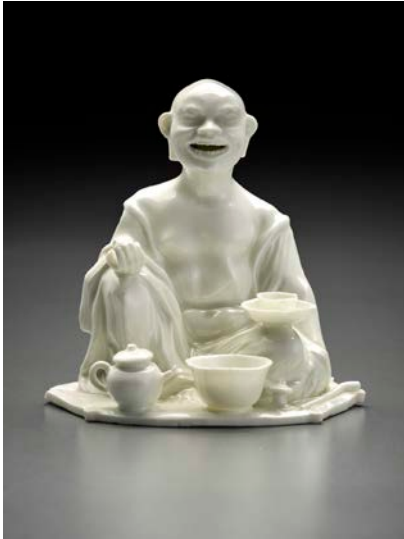
Decoration: Attributed to the workshop of Bartholomäus Seuter, (ca. 1678–1754)

H.: 6 inches

The Frick Collection, Gift of Henry H. Arnhold, 2019

Photo: Michael Bodycomb

5.



Incense Burner in the form of a Seated Buddhist Divinity

Hard-paste porcelain, ca. 1715-20

Meissen Porcelain Manufactory

H. 3 7/8 inches

The Frick Collection, Gift of Henry H. Arnhold, 2019

Photo: Michael Bodycomb

6.



Mounted Tankard

Hard-paste porcelain with gilt-metal mounts, ca. 1723-24

Meissen Porcelain Manufactory

Decoration attributed to Johann Gregorius Höroldt, (1696–1775)

H. (with lid): 7 1/4 inches

The Frick Collection, Gift of Henry H. Arnhold, 2019

Photo: Michael Bodycomb

7.



Mounted Meissen Group

Hard-paste porcelain with gilt-bronze mounts (Probably French), ca. 1728–30

Meissen Porcelain Manufactory

Model attributed to George Christian Fritsche, (act. 1681–1709)

H.: 6 inches

The Frick Collection, Gift of Henry H. Arnhold, 2019

Photo: Michael Bodycomb

8.



Fluted dish

Hard-paste porcelain, ca. 1729–30

Meissen Porcelain Manufactory

D: 7 ¾ inches

The Frick Collection, Gift of Henry H. Arnhold, 2019

Photo: Michael Bodycomb

9.



Medallion with Profile of Friedrich August II, Crown Prince of Saxony

Böttger red stoneware, ca. 1710–13

Meissen Porcelain Manufactory and Johann Friedrich Böttger, (1682–1719)

Diam.: 3 7/8 inches

The Frick Collection, Gift of Henry H. Arnhold, 2019

Photo: Michael Bodycomb

10a.



One of a pair of “Birdcage” vases

Hard-paste porcelain, after 1730

Meissen Porcelain Manufactory

20 1/4 × 14 × 14 inches

The Frick Collection, Gift of Henry H.
Arnhold, 2015

Photo: Michael Bodycomb

10b.



One of a pair of “Birdcage” vases (detail)

Hard-paste porcelain, after 1730

Meissen Porcelain Manufactory

20 1/4 × 14 × 14 inches

The Frick Collection, Gift of Henry H.
Arnhold, 2015

Photo: Michael Bodycomb

11.



Great Bustard

Hard-paste porcelain, 1732

Modeled by Johann Gottlieb Kirchner
(1706–after 1737)

33 × 17 × 11 1/4 inches

The Frick Collection, Gift of Henry H.
Arnhold, 2013

Photo: Michael Bodycomb

12.



Two Birds of Paradise

Hard-paste porcelain, ca. 1733

Meissen Porcelain Manufactory

Model by Johann Joachim Kändler (1706–
1775)

H.: 9 1/4 inches

The Frick Collection, Gift of Henry H.
Arnhold, 2019

Photo: Michael Bodycomb

13.



Mustard Pot and Cruet

Hard-paste porcelain, ca. 1737–39

Meissen Porcelain Manufactory

Modeled by Johann Joachim Kändler (1706 - 1775)

Cruet height: 7 inches

Mustard pot height: 7 ½ inches

The Frick Collection, Gift of Henry H. Arnhold, 2019

Photo: Michael Bodycomb

14.



Figure of Hofnarr Fröhlich

Hard-paste porcelain, 1738

Meissen Porcelain Manufactory

Modeled by Johann Joachim Kändler, (German, 1706–1775)

H.: 9 ¾ inches

The Frick Collection, Gift of Henry H. Arnhold, 2019

Photo: Michael Bodycomb

15a.



Brush Handle from the Toilette Service Sent to the Queen of Naples

Hard-paste porcelain, 1745–47

Decorated by Gottlob Siegmund Birckner (1712–1771)

1 ¾ x 4 1/8 x 5 ¼ inches

The Frick Collection, Gift of Henry H. Arnhold, 2019

Photo: Michael Bodycomb

15b.



Brush Handle from the Toilette Service Sent to the Queen of Naples

Hard-paste porcelain, 1745–47

Decorated by Gottlob Siegmund Birckner (1712–1771)

1 ¾ x 4 1/8 x 5 ¼ inches

The Frick Collection, Gift of Henry H. Arnhold, 2019

Photo: Michael Bodycomb

RIGHTS AND REPRODUCTION INFORMATION

These jpegs are on loan exclusively for publicity purposes. Permission for any other use of this material must be sought separately. Contact communications@frick.org with any questions.

- * These photo materials may not be lent or used again for publication without prior permission.
- * Downloadable links, such as WeTransfer, may not be forwarded or distributed without prior permission.
- * Reproductions may not run off the edge of the paper.
- * Reproductions may not be superimposed with type matter or in any way defaced or altered. Exceptions have been granted pending further conversation. To pursue, contact communications@frick.org.
- * The word “detail” must appear in the caption with the complete credit line in the event that a detail is used.
- * Required for publication: with each image, the collection and photo credits as indicated above must be included in print, online, and with social media posts.
- * Publisher shall furnish a complimentary copy and/or PDF of the issue of the periodical or book in which the reproduction(s) appears. Publisher shall send website links for online articles, and screenshots or links for social media posts.