

Precision and Splendor: Clocks and Watches at The Frick Collection

January 23, 2013, through February 2, 2014

The Frick Collection, New York

PRESS IMAGE LIST

Digital images are available for publicity purposes; please contact the Press Office at 212.547.6844 or mediarelations@frick.org.

1.



George Smith (active c. 1622–after 1646), *Silver Calendrical and Astronomical Pendant Watch*, c. 1625, silver gilt, gilt brass, and steel on brass, W.: 1 5/16 inches, The Frick Collection, New York, Bequest of Winthrop Kellogg Edey; photo: Michael Bodycomb

2.



Front

Chavannes le Jeune (active c. 1650–1660), enameling attributed to Pierre Huaud (1612–1680), *Gold and Enamel Pendant Watch*, c. 1660, D.: 1 1/4 inches, The Frick Collection, New York, Bequest of Winthrop Kellogg Edey; photo: Michael Bodycomb

2a.



Back

Chavannes le Jeune (active c. 1650–1660), enameling attributed to Pierre Huaud (1612–1680), *Gold and Enamel Pendant Watch*, c. 1660, D.: 1 1/4 inches, The Frick Collection, New York, Bequest of Winthrop Kellogg Edey; photo: Michael Bodycomb

3.



Henry Arlaud (1631–1689), enameling by Pierre Huaud II (1647–c. 1698), *Gold and Enamel Pendant Watch*, c. 1685, D.: 2 5/16 inches, The Frick Collection, New York, Bequest of Winthrop Kellogg Edey; photo: Michael Bodycomb

4.



Front

Thomas Mudge (1715–1794), chaser and casemaker John Gastrill (active 1757–1766), *Gold Repoussé Pocket Watch*, 1757, D.: 1 3/4 inches, The Frick Collection, New York, Bequest of Winthrop Kellogg Edey; photo: Michael Bodycomb

4a.



Back

Thomas Mudge (1715–1794), chaser and casemaker John Gastrill (active 1757–1766), *Gold Repoussé Pocket Watch*, 1757, D.: 1 3/4 inches, The Frick Collection, New York, Bequest of Winthrop Kellogg Edey; photo: Michael Bodycomb

5.



Abraham-Louis Breguet (1747–1823) and Antoine-Louis Breguet (1776–1858), *Gold and Silver Double-Dial Desk Watch Showing Decimal and Traditional Time*, c. 1795–1807, D.: 2 7/8 inches, The Frick Collection, Bequest of Winthrop Kellogg Edey; photo: Michael Bodycomb

6.



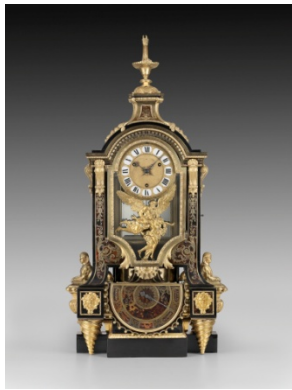
Pierre de Fobis (1506–1575), *Gilt-Brass Table Clock*, c. 1530, H.: 5 inches, The Frick Collection, New York, Bequest of Winthrop Kellogg Edey; photo: Michael Bodycomb

7.



David Weber (active 1623/24–1704), *Gilt-Brass and Silver Table Clock with Astronomical and Calendrical Dials*, probably 1653, H.: 23 3/8 inches, The Frick Collection, New York, Bequest of Winthrop Kellogg Edey; photo: Michael Bodycomb

8.



Isaac Thuret (1630–1706) or Jacques Thuret (1669–1738), case attributed to André-Charles Boulle (1642–1732), *Marquetry-Veneered Barometer Clock*, c. 1690–1700, case veneered with marquetry of ebony, tortoiseshell, and brass, mounted with gilt bronzes, H.: 45 1/4 inches, The Frick Collection, New York, Bequest of Winthrop Kellogg Edey; photo: Michael Bodycomb

9.



Garniture of One Clock and Two Vases, c. 1770, clock movement by Jean Martin (active 1737–1886), Chinese hard-paste porcelain garniture, Qing dynasty, Qianlong period, with French gilt-bronze mounts, clock 21 x 8 inches, vases 14 x 9 inches, Horace Wood Brock Collection

10.



Clock with Study and Philosophy, movement by Renacle-Nicolas Sotiau (1749–1791), figures after Simon-Louis Boizot (1743–1809), c. 1785–90, patinated and gilt bronze, marble, enameled metal, and glass, H.: 22 inches, Horace Wood Brock Collection

11.



The Dance of Time, Three Nymphs Supporting a Clock, movement by Jean-Baptiste Lepaute (1727–1802), sculpture by Claude Michel Clodion (1738–1814), 1788, terracotta, gilt brass, and glass, H.: 40 3/4 inches, The Frick Collection, New York, bequest of Winthrop Kellogg Edey; photo: Michael Bodycomb

These jpegs are on loan exclusively for publicity purposes in conjunction with this exhibition. Please return any distributed disks to the Media Relations & Marketing Department/The Frick Collection/1 East 70th Street/New York, NY 10021. Permission for any other use of this material must be sought separately.

- * These photo materials may not be lent or used again for publication without prior permission.
- * Reproductions may not run off the edge of the paper.
- * Reproductions may not be superimposed with type matter or in any way defaced or altered.
- * The word “detail” must appear in the caption with the complete credit line in the event that a detail is used.
- * **Required for publication:** with each image, the collection and photo credits as indicated above must be included in print.
- * Publisher shall furnish a complimentary copy of the issue of the periodical or book in which the reproduction(s) appears.